



# GAT MONTHLY MEMBERSHIP PROGRESS REPORT

Results as of: 6/30/2024

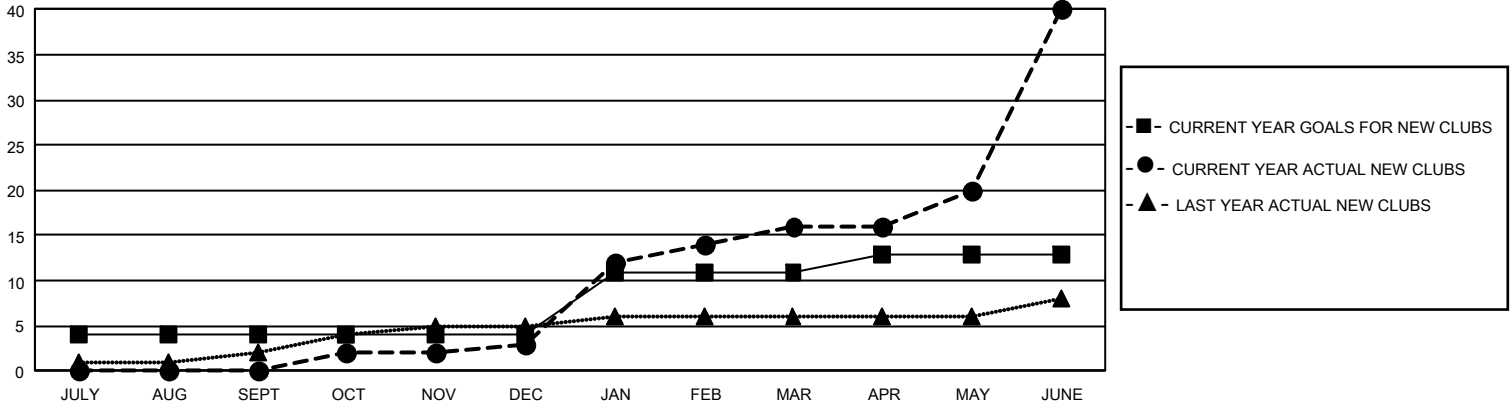
## GMT Constitutional Area 5 - C, Group A

REPORT DOES NOT INCLUDE CLUBS IN UNDISTRICTED AREAS.

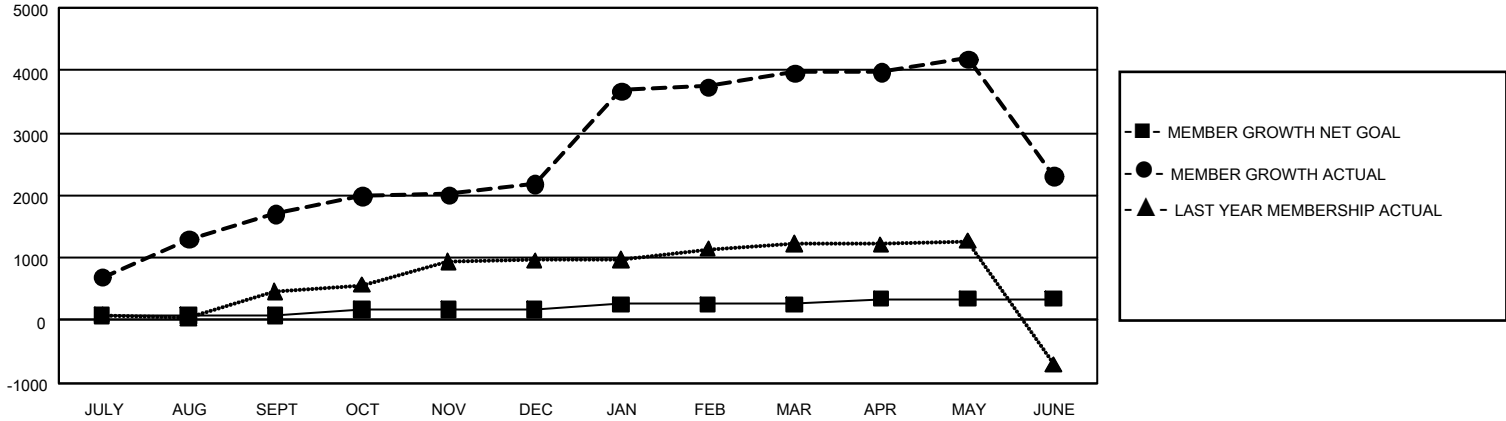
Clubs			
RESULTS FOR 2023-2024			
QUARTER	NEW CLUB GOAL	NEW CLUBS	DROPPED CLUBS
JULY/AUG/SEPT	12	0	2
OCT/NOV/DEC	0	3	3
JAN/FEB/MAR	21	13	0
APR/MAY/JUNE	6	24	0

Members			
RESULTS FOR 2023-2024			
QUARTER	MEMBER GROWTH NET GOAL	MEMBER GROWTH ACTUAL	DROPPED MEMBERS ACTUAL (including transfers)
JULY/AUG/SEPT	80	1,979	154
OCT/NOV/DEC	90	690	161
JAN/FEB/MAR	90	1,869	67
APR/MAY/JUNE	90	1,387	2,743

GOALS AND ACTUAL NEW CLUBS CUMULATIVE



GOALS AND ACTUAL MEMBERS CUMULATIVE



<b>DROPPED CLUBS: 5</b>  <b>DROPPED MEMBERS</b> DECEASED 17 CLUB CANCELLED 1 OTHER 3,102 <b>TOTAL 3,120</b>	627 CLUBS OF 693 ADDED 1 OR MORE NEW MEMBERS	<b>GENDER DISTRIBUTION</b> MALE 11,661 (63.28%) FEMALE 6,756 (36.66%) NON BINARY 0 (0.00%) PREFER NOT TO ANSWER 10 (0.05%)
	<a href="#">CLICK HERE FOR CUMULATIVE MEMBERSHIP DATA</a>	TOTAL FAMILY UNIT MEMBERS 681 FAMILY MEMBERS PAYING HALF DUES 364